



# LEGO Vincent Van Gogh - The Starry Night # 21333

## LIGHT KIT INSTALL GUIDE



## LEGO Vincent Van Gogh - The Starry Night # 21333 LIGHT KIT INSTALL GUIDE

Hi There!

We're here to help you get started on the LEGO® Vincent Van Gogh-The Starry Night # 21333 LIGHT KIT INSTALL GUIDE

This PDF details the instructions for the LED light kit only. If you are wishing to purchase this product, please go to our website at: [www.regodesign.net](http://www.regodesign.net).

If you run into any issues, please refer to the troubleshooting section towards the end of this guide or contact us at email: [support@regodesign.us](mailto:support@regodesign.us).

Enjoy!

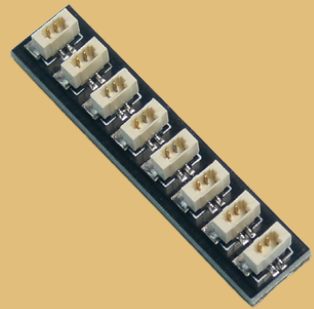




## PACKAGE CONTENTS:



White Bit Light 30 cm x 2  
White Bit Light 15 cm x 2  
Warm White 30 cm Bit Light x 3  
Green Headlight 30 cm x 1  
Blue Headlight 30 cm x 1  
Slow Flash Light 30cm x 1



1 x 4-Port Expansion Board  
1 x 8-Port Expansion Board



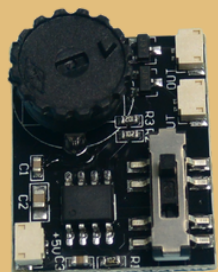
1 x 5 cm Connecting Cable  
1 x 15 cm Connecting Cable  
1 x 30 cm Connecting Cable



1 x USB Power Cable



1 x Battery Case



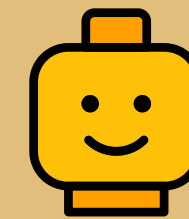
1 x Breathing lamp module



Infrared Sensor Switch x 1



1 x Viscous Accessories



## LEGO PIECES:

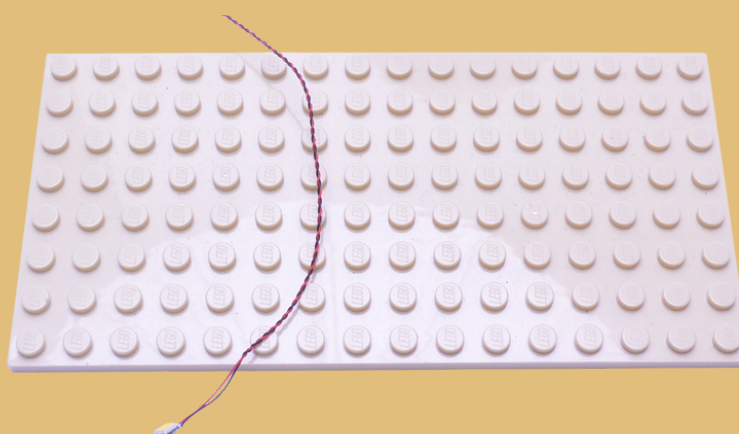
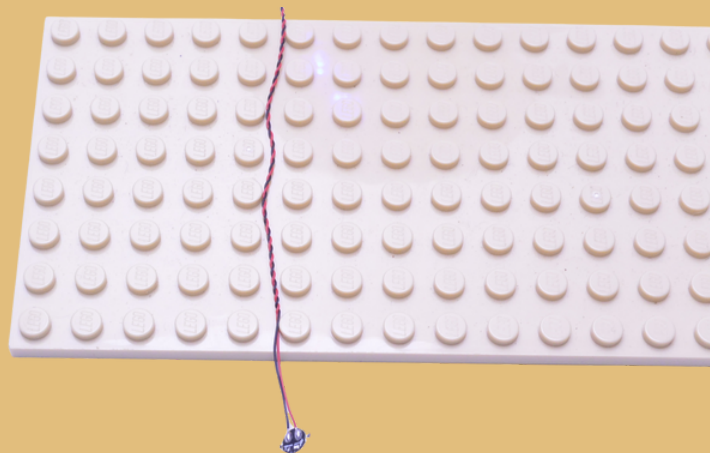
1 x Transparent 1 x 1 Round Dot

# Contents

Before You Begin	5
Instructions	8
Final Product	19
Troubleshooting	20
Contact	24



# Before You Begin

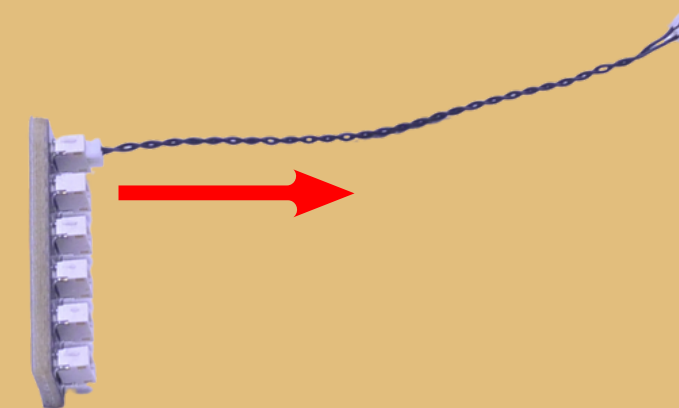


## Laying cables in between and underneath bricks

Cables can fit in between and underneath LEGO® bricks, tiles, and plates providing they are laid correctly between the LEGO® studs.

Please be careful when join LEGO® together around cables; instead ensure they are laying comfortably in between each stud.

**CAUTION:** You can't use force on LEGO® to connect over a cable or it will result in damaging the cable and light.

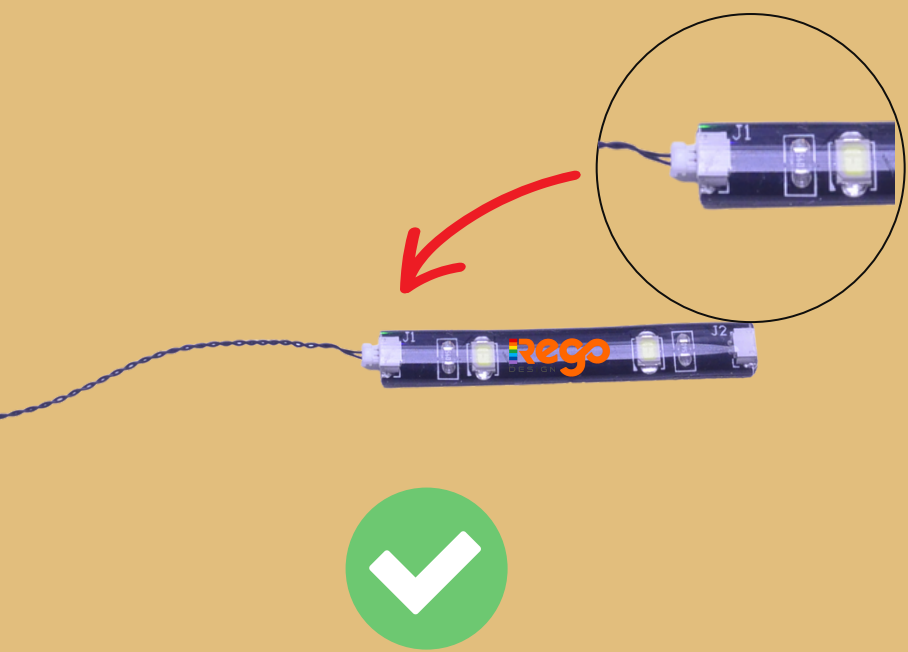


## Connecting Cable Connectors To Expansion Boards

Please paid extra care when inserting connectors to ports of Expansion Boards. When connectors can be inserted only one way and it is the right way. With the expansion board facing up, look for the soldered “=” symbol on the left side of the port. The connector side with the wires exposed should be facing toward the soldered “=” symbol as you insert into the port. If a plug won't fit easily into a port connector, which it should. **PLEASE DO NOT FORCE IT.**

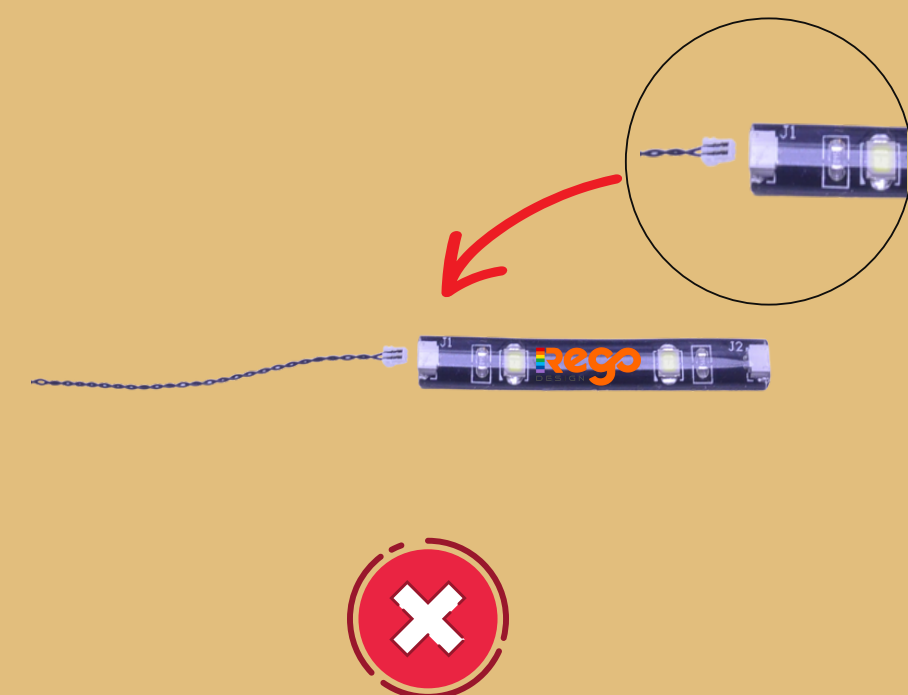
Incorrectly inserting the connector will result in bent pins inside the port or even overheating of the expansion board when connected. So please don't do it.

# Before You Begin



## Connecting Cable Connectors To Strip Lights

Please take extra care when inserting connectors to ports on the Strip Lights. When connectors can be inserted only one way and it is the right way. With the Strip Light is facing up, please ensure the side of the connector with the wires exposed is facing down. If a plug won't fit easily into a port connector, which it should. PLEASE DO NOT FORCE IT. YOU will damage the plug and the connector.

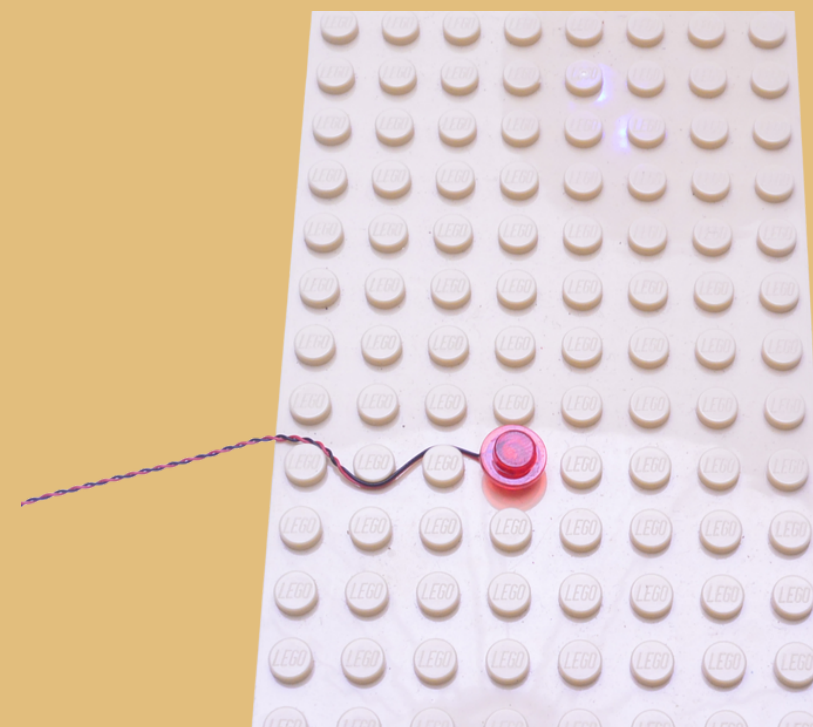


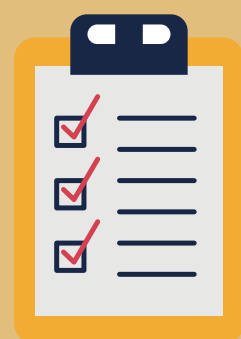


# Before You Begin

## Installing Bit Lights Under Lego® Bricks And Plates

When installing Bit Lights under LEGO® pieces, please ensure they are placed the correct way up (Yellow LED component exposed). You can place them directly on top of LEGO® studs or in between. As the picture show.





# INSTRUCTIONS

To ensure a correct, quick, and smooth installation of your light kit, please read and follow each step carefully.

If you run into any issues, please refer to the online troubleshooting guide or just send us a quick email at [support@regodesign.us](mailto:support@regodesign.us)

We will answer as soon as possible.

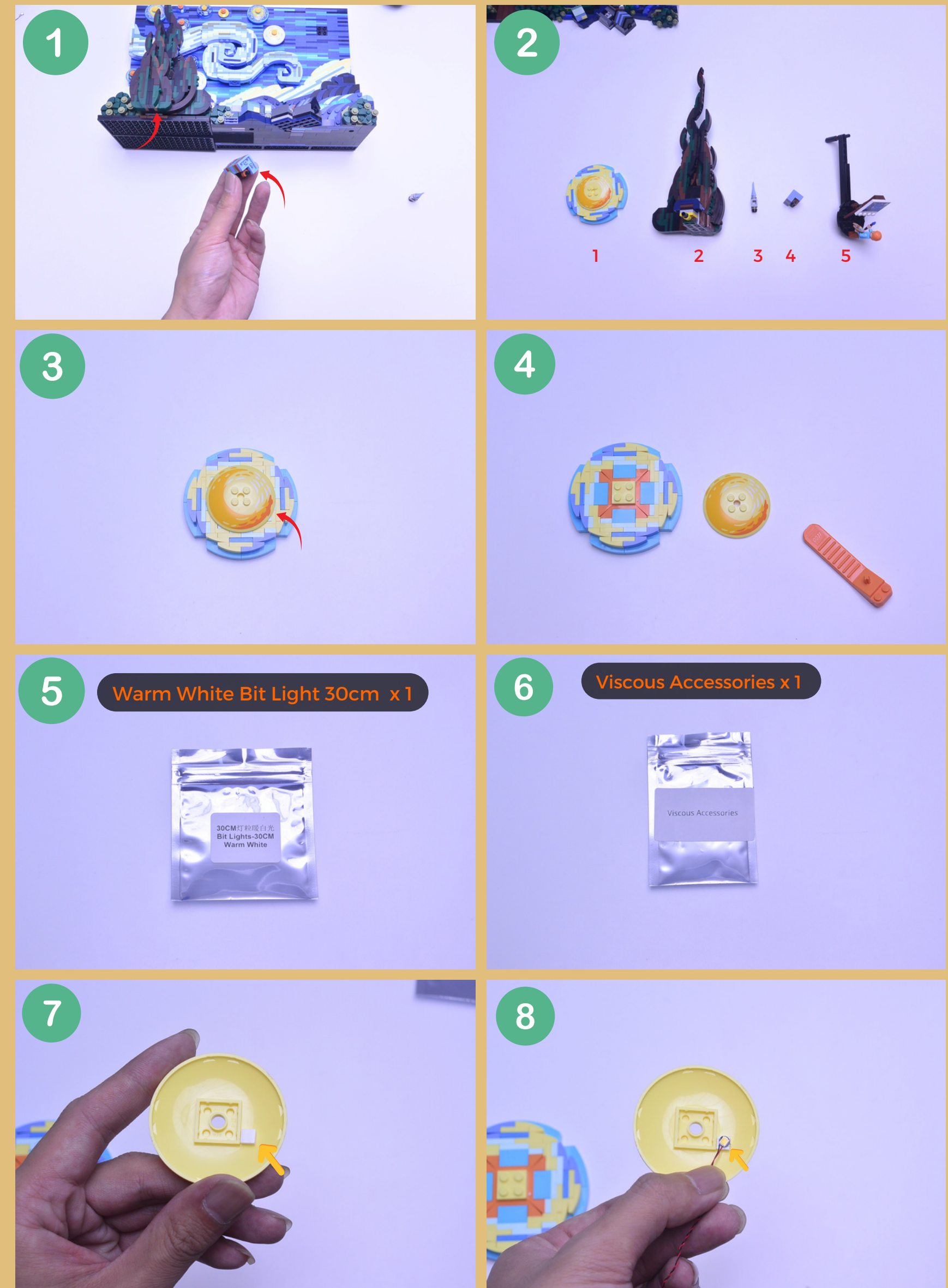
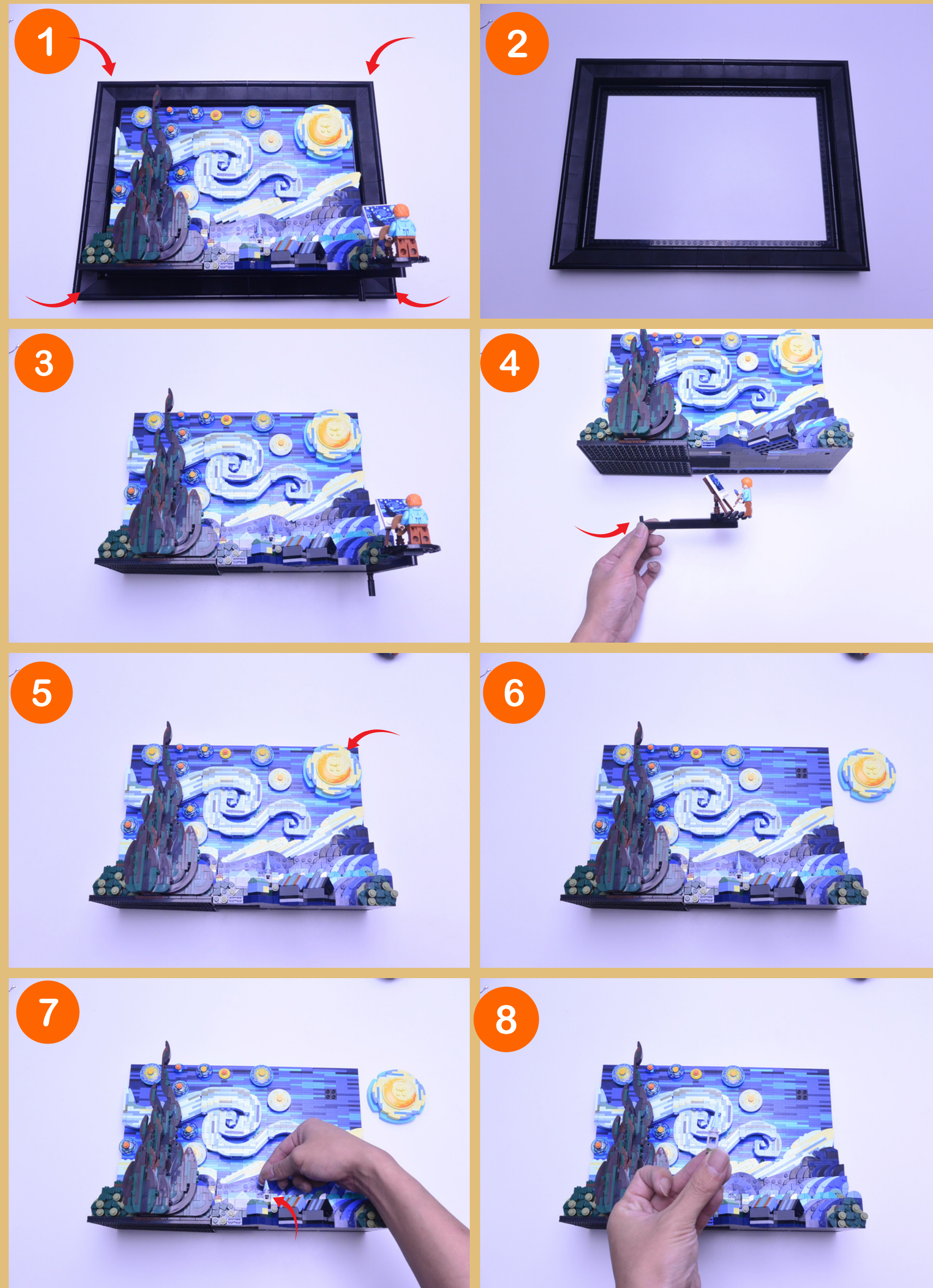






If you experience any issues with the lights not working and suspect an issue with a component, please try a different port on the expansion board to verify where the fault lies (with the light or expansion board). To correct any issues with expansion board ports, please view the section addressing expansion board issues in our troubleshooting section.

1



LEGEND



DISCONNECT



CONNECT  
RECONNECT



TURN / FLIP



DIRECTIONAL



TWIST / BRAID



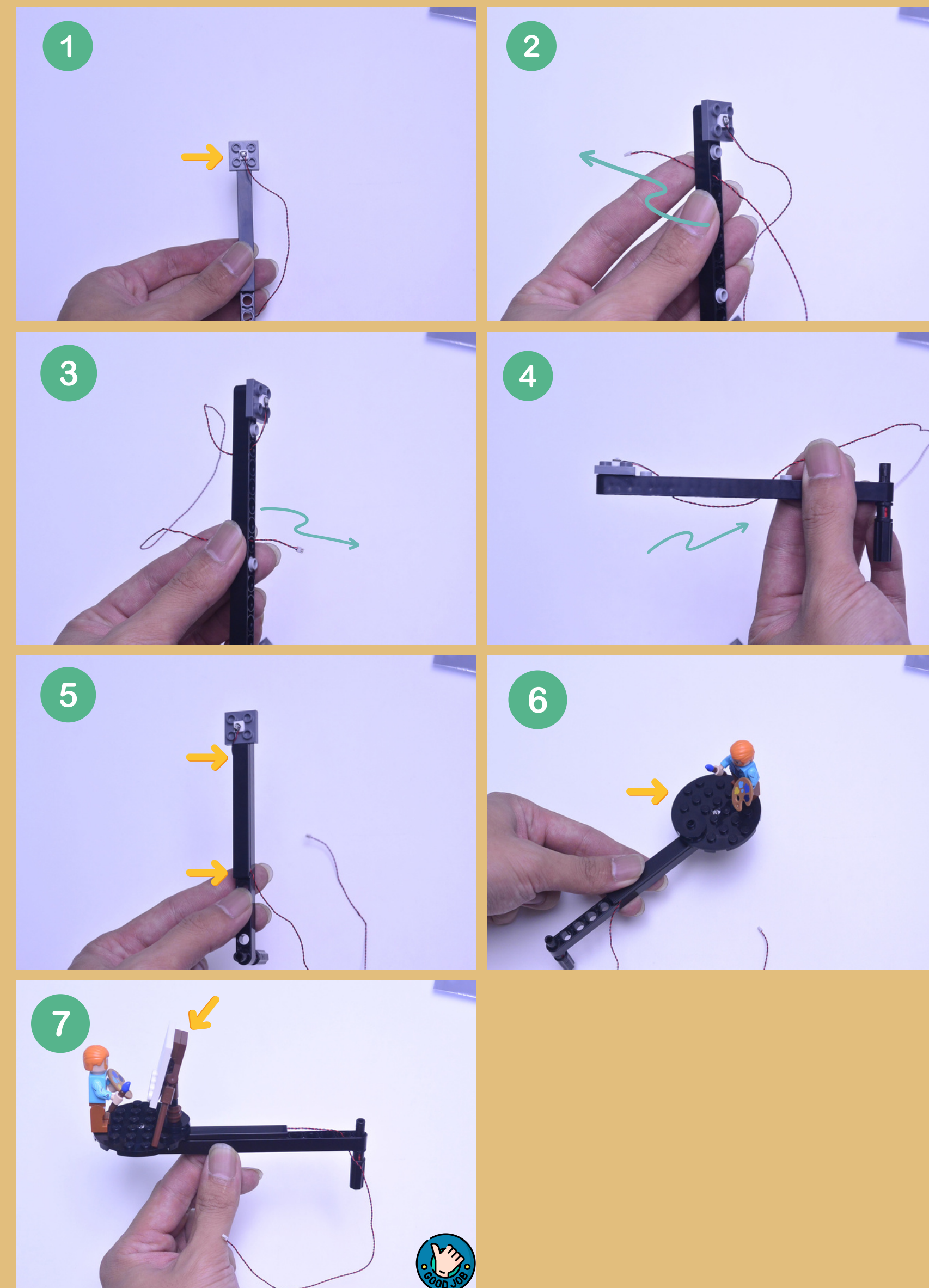
POWER ON TEST



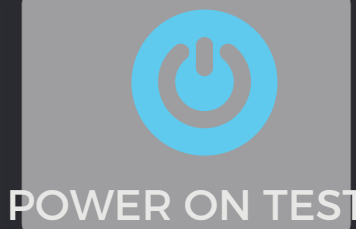
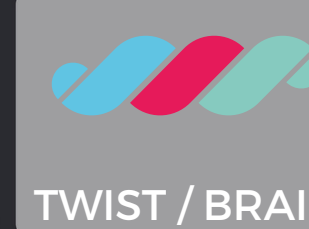
NOTE ICON



2



LEGEND





3

1

2

3

Headlights Green 30cm x 1  
Viscous Accessories x 1

4

5

6

7

1

2

Warm White Bit Light 30cm x 1

3

Viscous Accessories x 1

4

5

6

7

Transparent 1 x 1 Round Dot

8



Please open the 3m glue just for one side, for a better installation

# LEGEND



DISCONNECT



CONNECT  
RECONNECT



TURN / FLIP



DIRECTIONAL



TWIST / BRAID



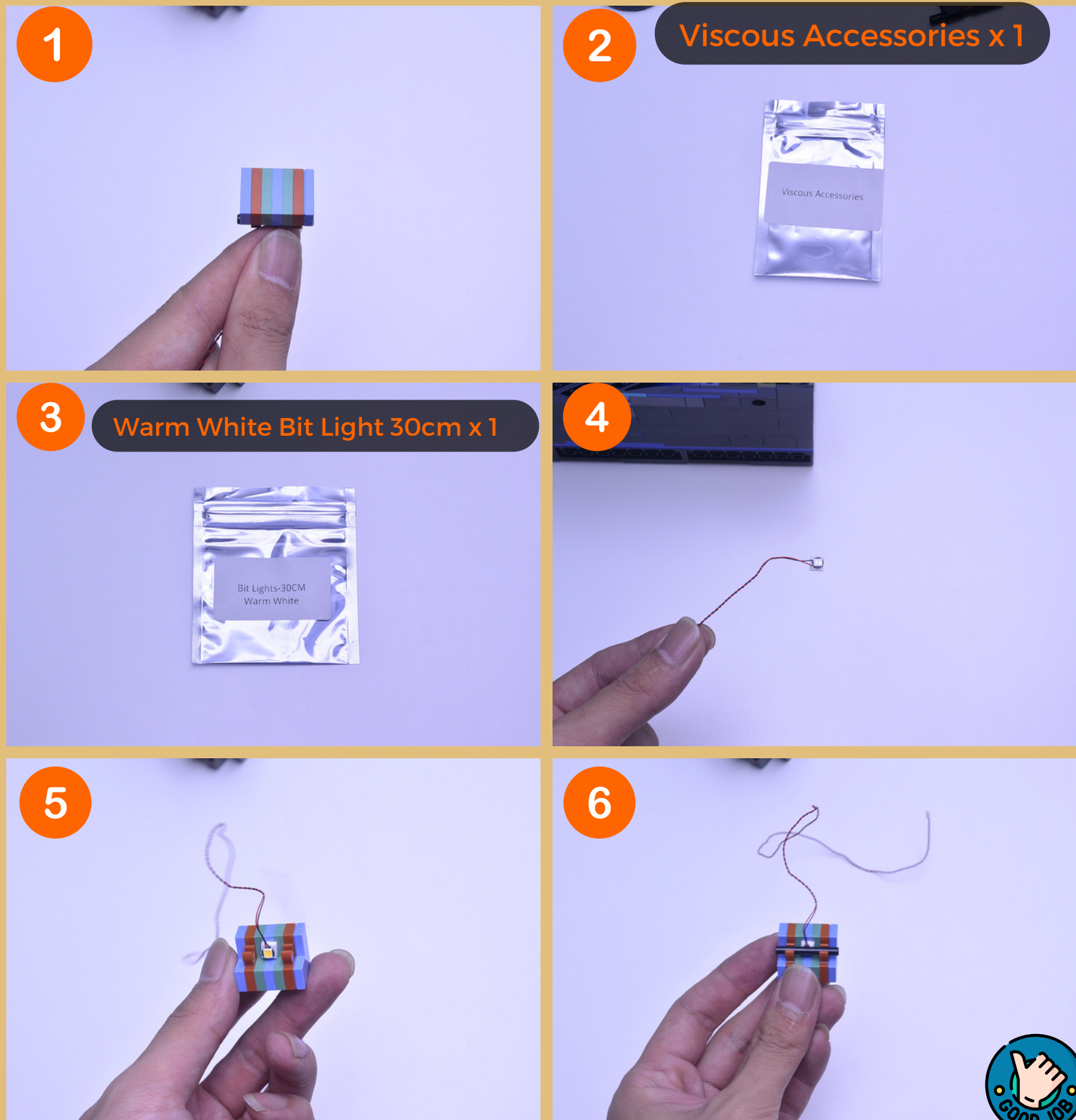
POWER ON TEST



NOTE ICON



4



LEGEND



DISCONNECT



CONNECT  
RECONNECT



TURN / FLIP



DIRECTIONAL



TWIST / BRAID



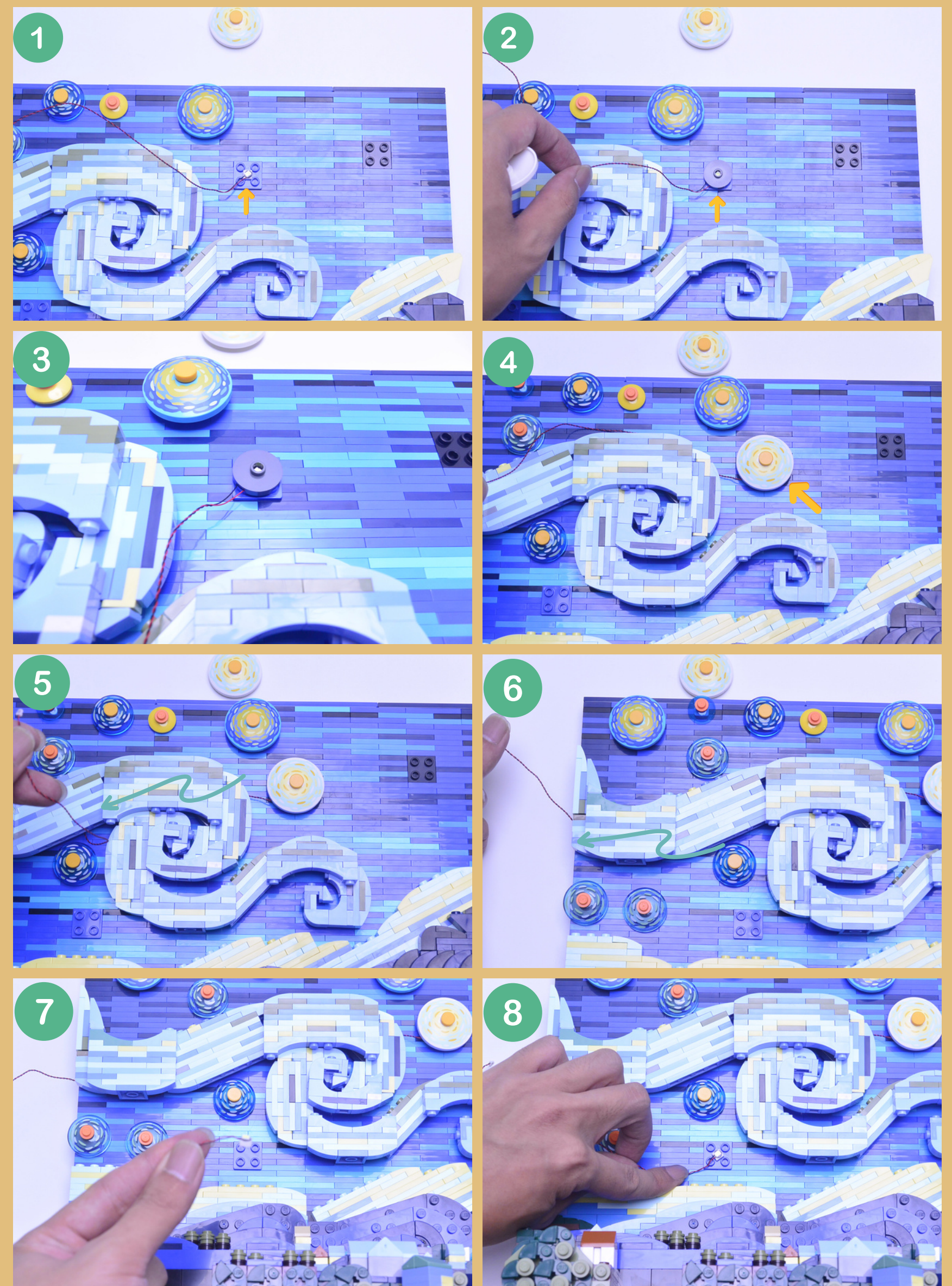
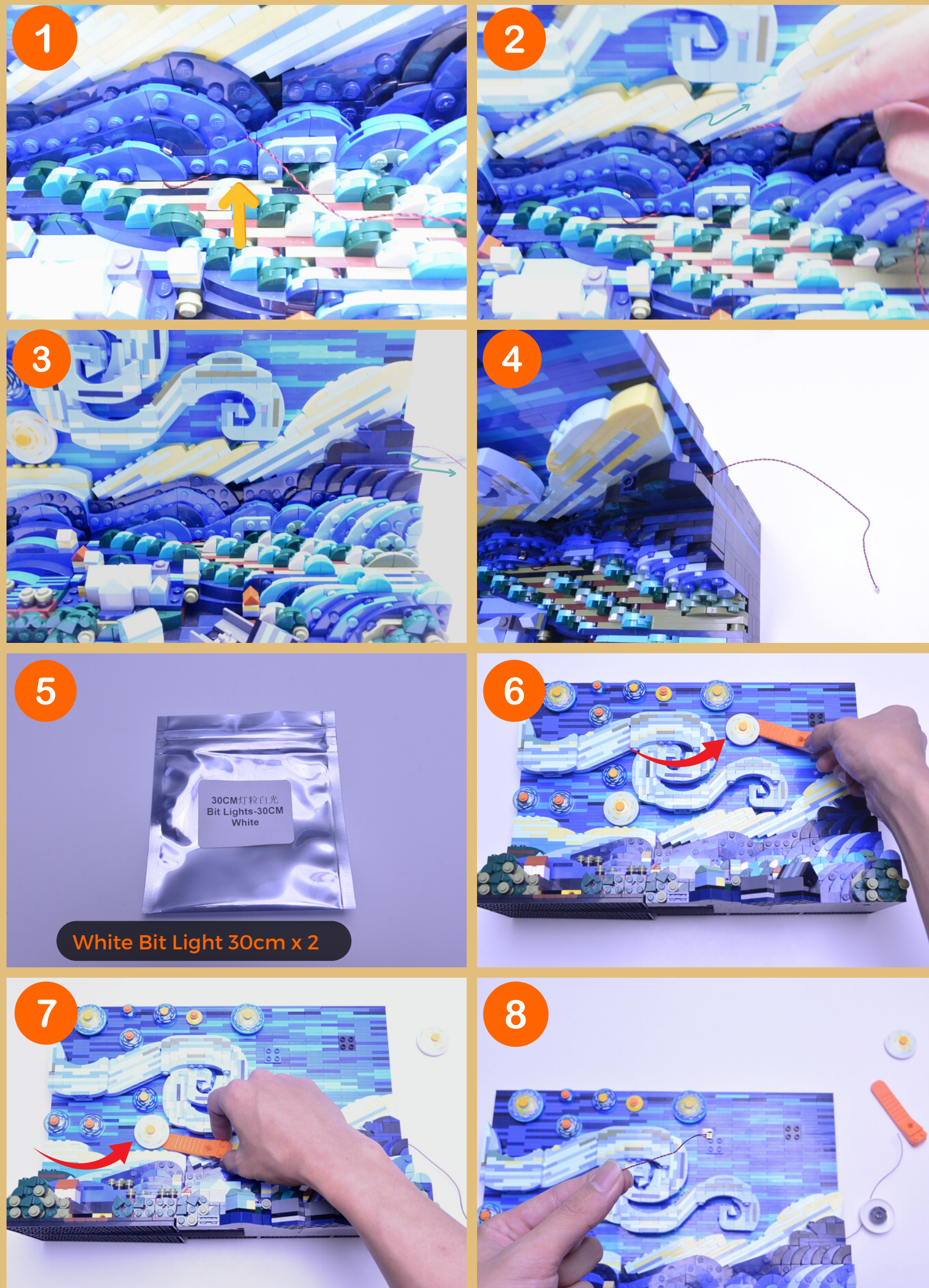
POWER ON TEST



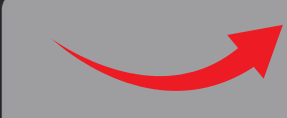
NOTE ICON



5



LEGEND



DISCONNECT



CONNECT  
RECONNECT



TURN / FLIP



DIRECTIONAL



TWIST / BRAID



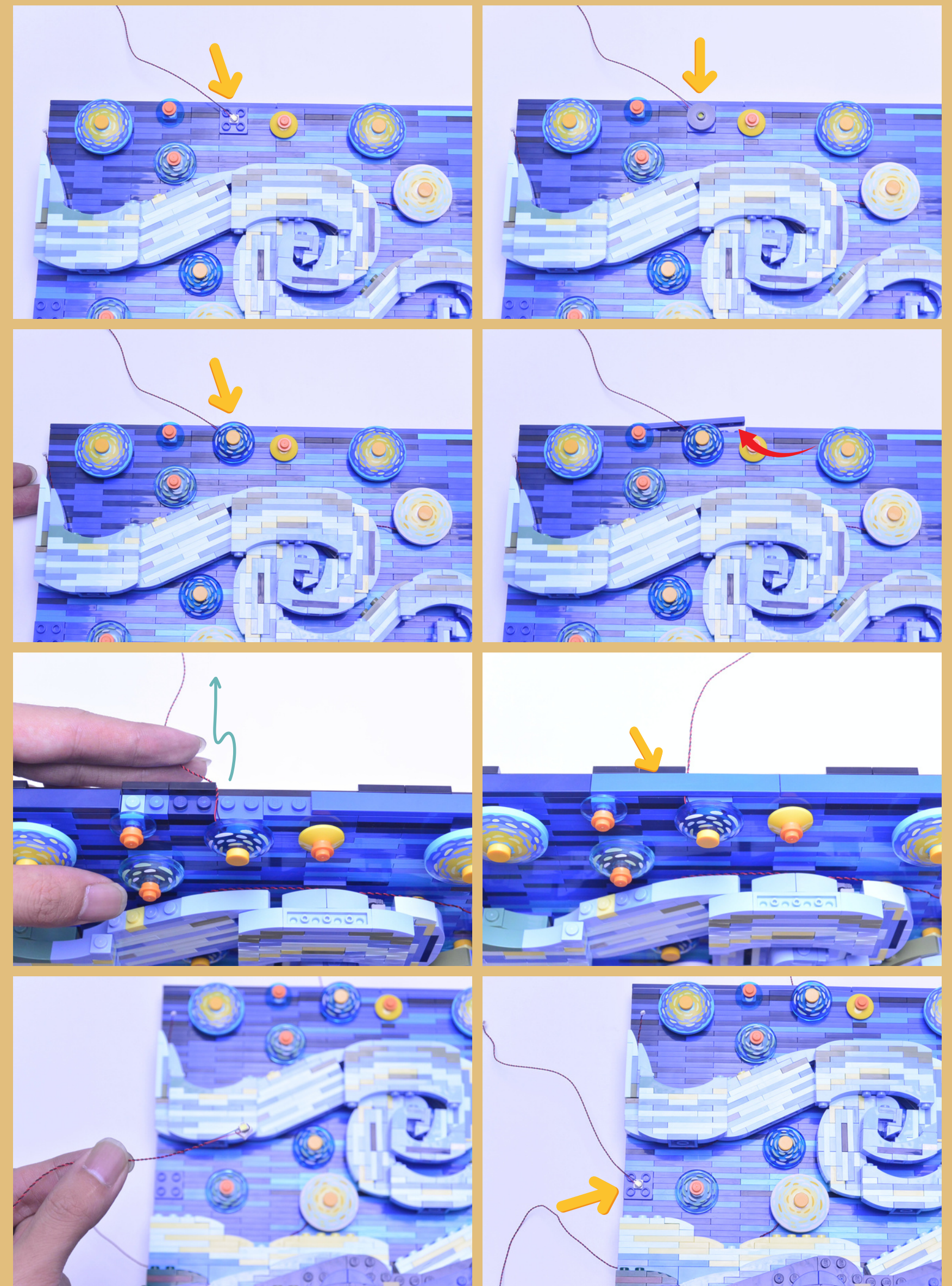
POWER ON TEST



NOTE ICON



6



LEGEND



DISCONNECT



CONNECT  
RECONNECT



TURN / FLIP



DIRECTIONAL



TWIST / BRAID



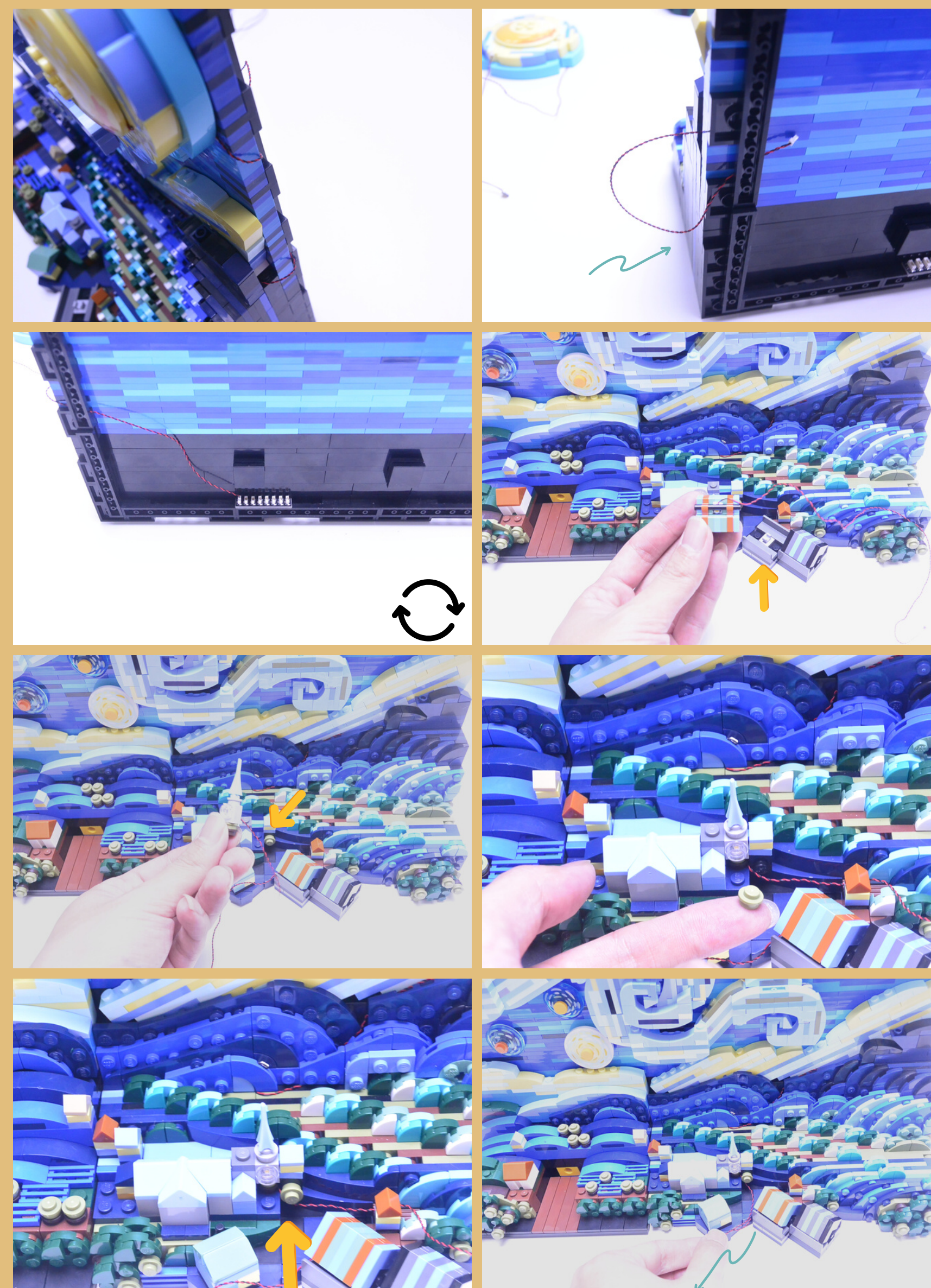
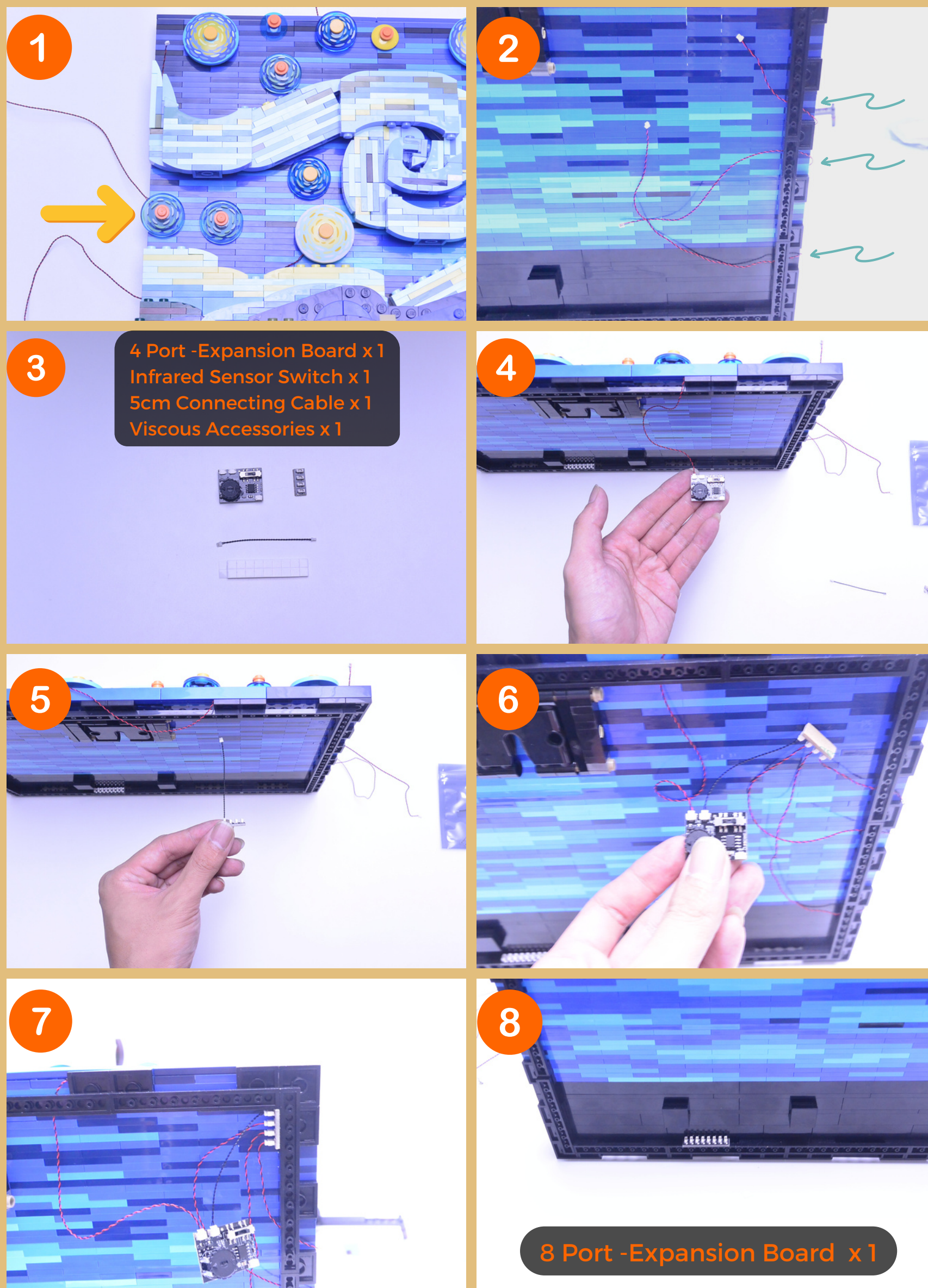
POWER ON TEST



NOTE ICON



7



## LEGEND



DISCONNECT



CONNECT  
RECONNECT



TURN / FLIP



DIRECTIONAL



TWIST / BRAID

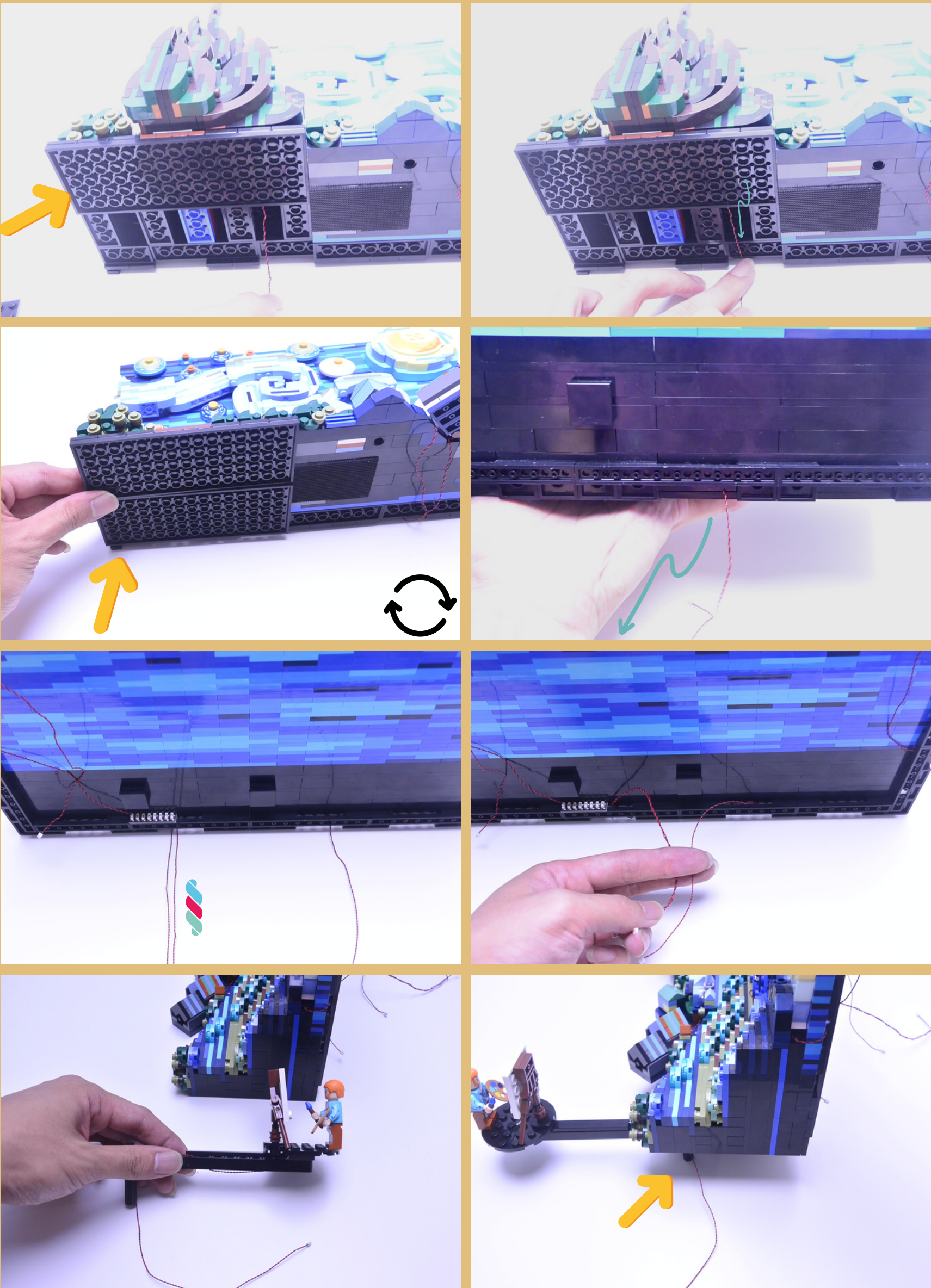
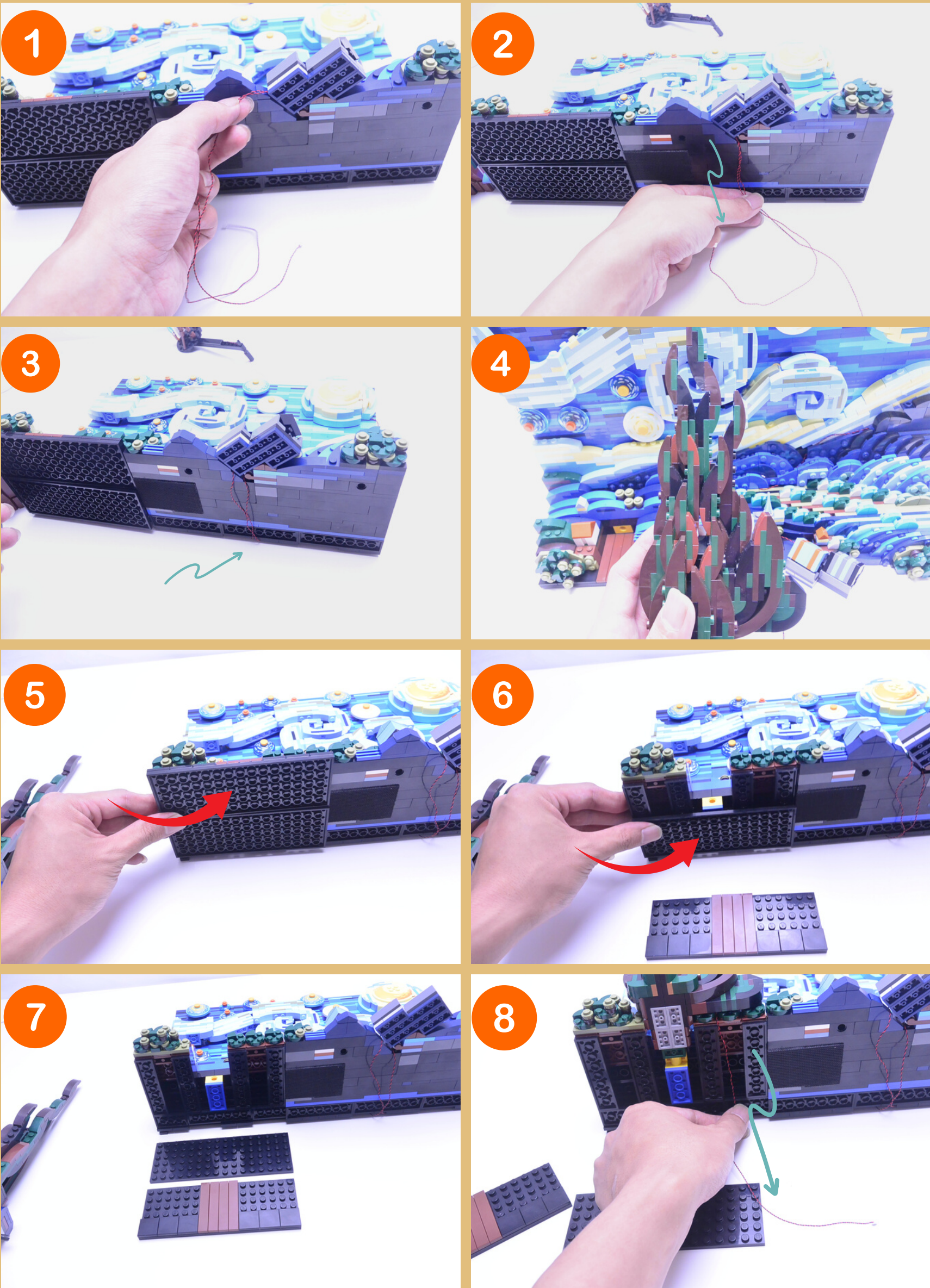


POWER ON TEST



NOTE ICON





Please double check to make sure that the wire is on this spot

## LEGEND



DISCONNECT



CONNECT  
RECONNECT



TURN / FLIP



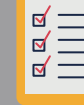
DIRECTIONAL



TWIST / BRAID



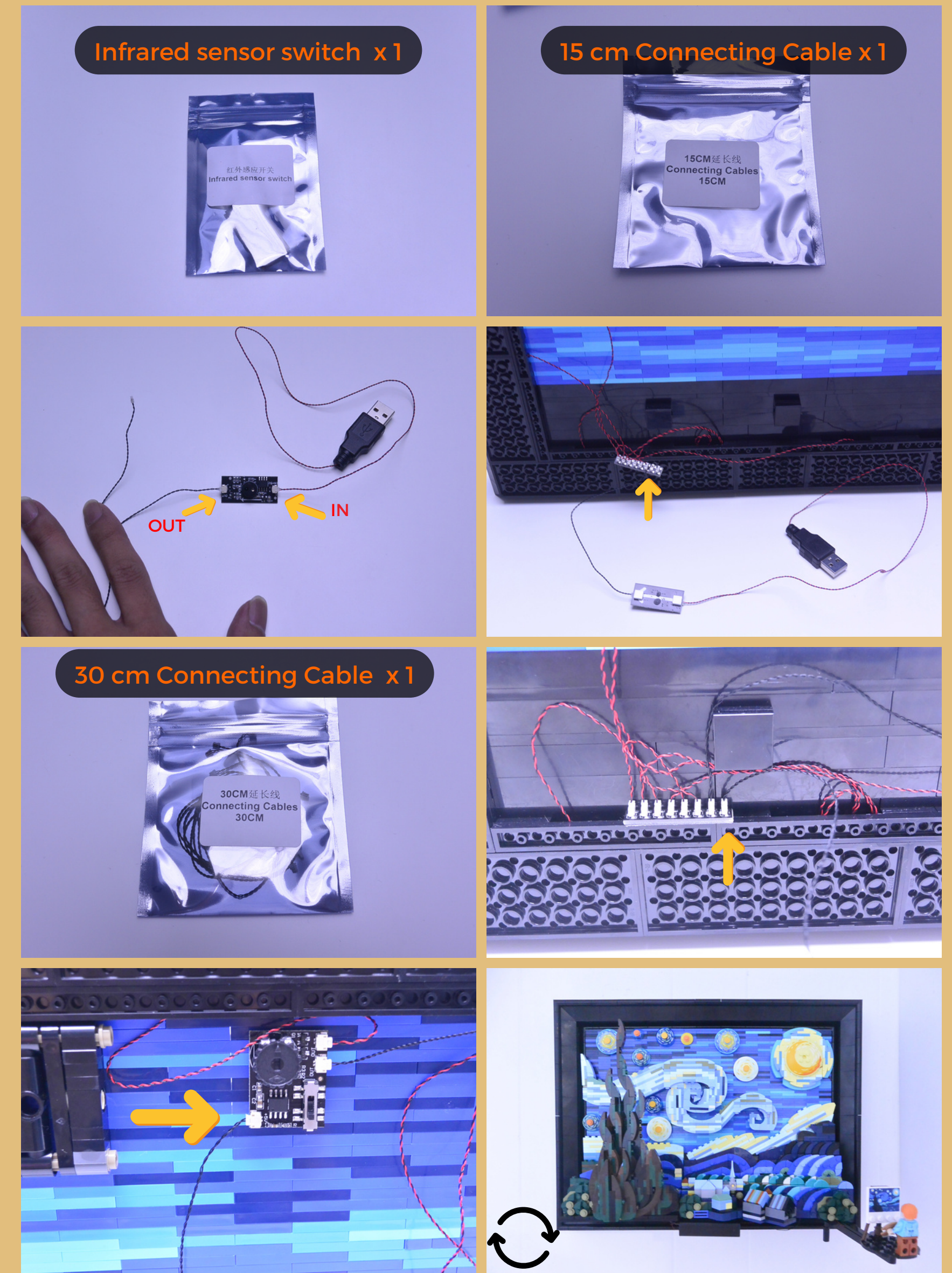
POWER ON TEST



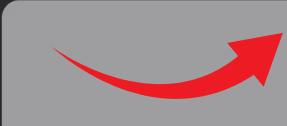
NOTE ICON



9



LEGEND



DISCONNECT



CONNECT  
RECONNECT



TURN / FLIP



DIRECTIONAL



TWIST / BRAID



POWER ON TEST



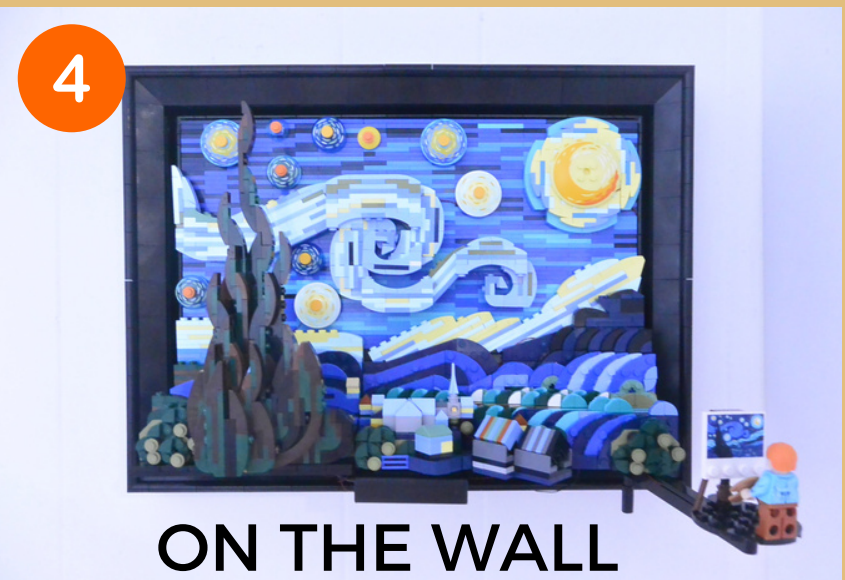
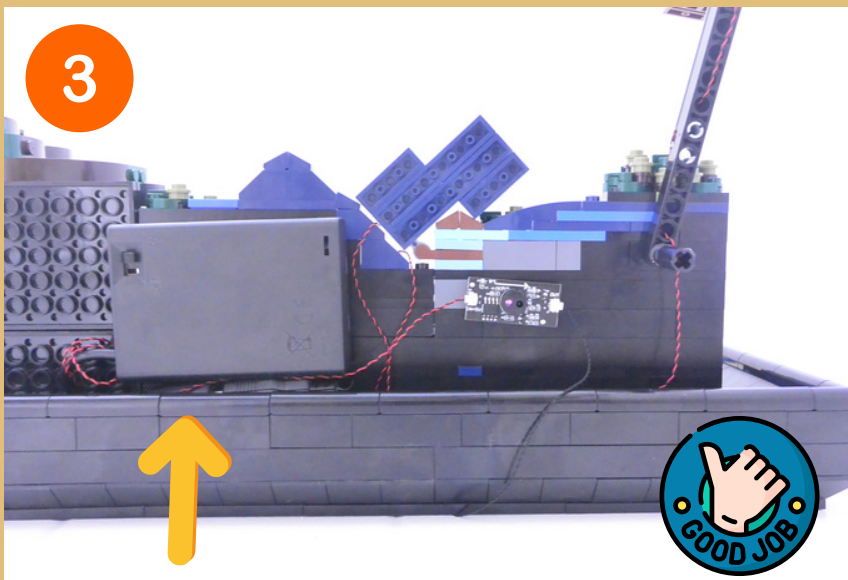
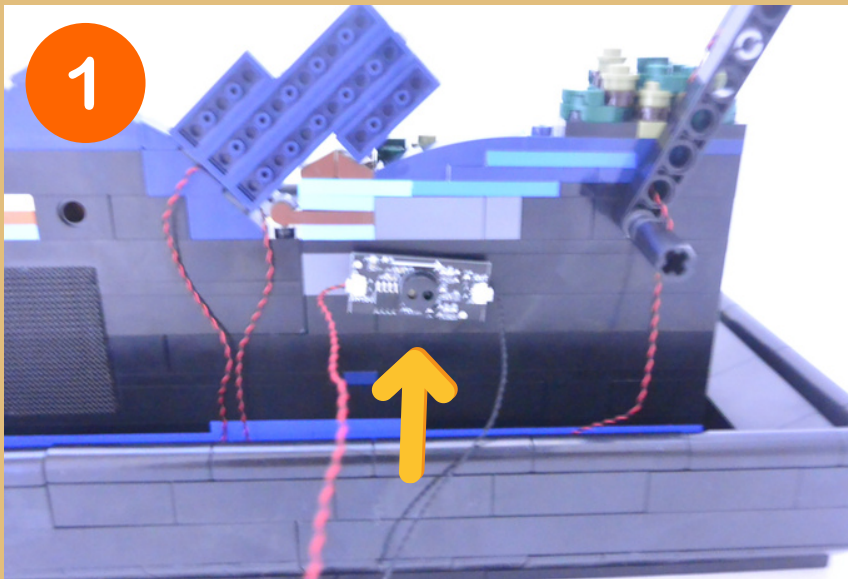
NOTE ICON



10

In order to turn on the model; swipe your hand left to right or right to left under the infrared sensor switch. For brightness just put your hand under the sensor like a automatic hand sanitizer.

Please stick the tape to the battery box and stick it to the bottom of the model



ON THE WALL



The picture is present the model, when its hang on the wall. But, if you wish it to be places on a countertop. Then you need to move the infrared sensor switch to the right side of the model. If you want the sensor on its perfect performance, then the least you will do is to have anything around it in a distance of 15 inches.

LEGEND



DISCONNECT



CONNECT  
RECONNECT



TURN / FLIP



DIRECTIONAL



TWIST / BRAID

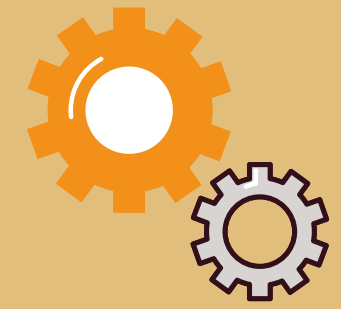


POWER ON TEST



NOTE ICON



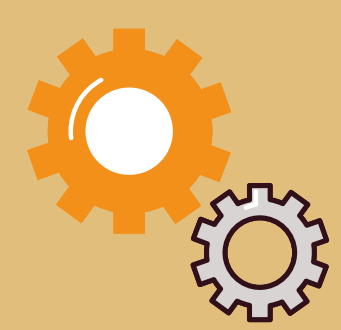


# Final Product

This Finally Completes Installation of the Lego Vincent Van Gogh-The Starry Night # 21333 Light Kit







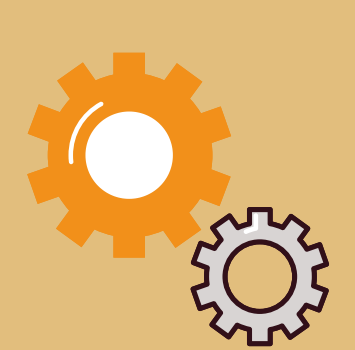
# TROUBLESHOOTING

Rego Design Lighting kits contain individual components that are very tiny and can be easily damaged if not handled correctly.

To prevent unnecessary damage to components, we highly recommend for you to check the User Guide section, “Important things to note” and read carefully. When you follow the procedures in the User Guide that will help you prevent from all faults and damages to your Rego Design lighting kit components.

If you only experiencing issues with your Rego Light set, you can just read what's underneath for a list of common causes to help you troubleshoot. If you have extra question, check out User Guide or send a quick email at [support@regodesign.us](mailto:support@regodesign.us)





# TROUBLESHOOTING

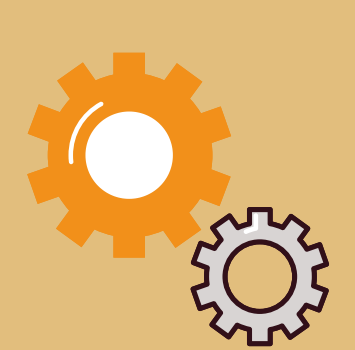
## Check Your Wires

In order for Rego components to fit in between and underneath LEGO® bricks, the components need to be very tiny. Due to this fact, Rego Design components can be easily damaged when not handled correctly.

Please be careful when removing unpacked components out of the packaging and please ensure not to forcibly pull the wires as this can damage the soldering that attach the wires to the LEDs.

If the wiring is detached from the LED itself, the light will not function correctly. When connecting lights to your LEGO® set, please check that there are no pinched wires underneath or in between bricks and plates. When the wires are pinched and the exposed wires are touching each other, this will cause a crosswire and the lights to not function correctly.





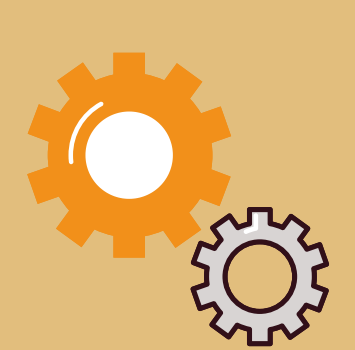
# TROUBLESHOOTING

## Check for AA batteries using the AA battery pack

Inside the battery pack are symbols indicating which direction the AA battery should be inserted. The flat side of the battery should be paired with the spring side of the battery pack. If the batteries have been installed correctly and your kit still isn't operating correctly, the next step is to check the wiring.

First, please ensure that the batteries have power using a battery charge gauge. If the batteries have no power, replace the batteries. If the batteries still have power, please check to see if the batteries have been inserted correctly into the battery pack.





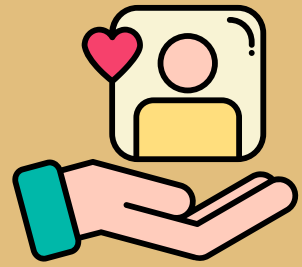
# TROUBLESHOOTING

## Check Your Expansion Board Ports/ Strip Light Ports / Effects Board Ports

It is important to note that connectors can only be inserted to the expansion board, strip light, or effects board ports in one direction. It should be an easy installation, so if not turn it over. PLEASE DO NOT FORCE IT.

Not only will a light connected to the damaged port not work, but if the pins inside the port are bent to a point they are touching each other, this can result in all other lights in the system to stop working. This is a short circuit.





## CONTACT US

If you have an enquiry regarding the online shop, our products or a general enquiry or other simple question, please refer to our Frequently Asked Questions webpage here at [www.regodesign.net](http://www.regodesign.net). Alternatively, you can contact our Customer Services team by email a mail here at:

[support.regodesign.us](mailto:support.regodesign.us)

**We thank you for purchasing this product and hope you enjoy!**





[www.regodesign.net](http://www.regodesign.net)